

WORKER INTEGRA



The TME Worker Integra is a bench-top, high-resolution (as low as 0.0001 psig) leak test instrument with a small footprint and user-friendly ease of operation. The system can be configured to perform pressure or vacuum decay leak testing, flow and occlusion testing on non-porous, flexible or rigid products. Models are available for pressure ranges from 15 to 150 psig, and flow rates from as little as 10 ccm to as much as 10 lpm.

Icon-Based Touchscreen Color Display

The touchscreen display provides easy, clear navigation through the wide variety of data handling and review screens. Clearly defined icons make it easy to choose test modes, select parameters, and view test results with an interactive graph that makes it easy to view the pressure or flow during the test.

Standard Test Modes:

Pressure or Vacuum Decay Leak, Backpressure Occlusion, or Flow Rate (Optional)

Standard I/O Functions:

- USB connection to PC
- USB ports for keyboard, mouse, printer, or bar code reader
- USB storage support for program data and datalog record export
- LAN remote instrument control
- data transfer, and operation
- Web Interface for datalog review
- Meets FDA CFR 21 Part 11
- NIST Traceable Calibration

Programs

The TME Worker Integra allows users to input test settings using a touch screen menu and parameters that can be stored as programs, while tracking lot codes, operator name, and other vital information. Programs can be associated with specific items under test to maximize operator efficiency and accuracy when a variety of products are being tested. The instrument can store over 100 programs in memory, to be recalled at a touch by the operator.

Test Results

All test results stored in the data log can be navigated and reviewed with ease. The advanced communications functions include an RS-232 port and USB slave serial port that log test results and can accept remote start commands. Data may be exported to USB storage devices and are accessible over the LAN using any web enabled browser. The Worker Integra's data storage meets FDA CFR 21 Part 11 standards for security.



The TME Worker Integra is a completely integrated process control tool. With repeatable and quantitative results, it is an affordable unit for everyday leak, flow and occlusion testing requirements.

Specifications

Dimensions.

10.0"W x 10"D x 9"H

Power

Universal 90-240V @ 50-60 Hz (60Watt max)

Storage and/or Operating Environment

0-30°C (50-90°F) RH < 80%,
non-condensing environment

Controls

LED Start/Stop Button, Key Lock, Power Button

Test Channels

Single channel

Display

5.7" QVGA Color Touchscreen

Pressure Control

Manual adjustable precision regulator or E/P Automatic regulator

Pressure Control (Option)

Electronic Regulator Available

Pressure Units

Psig, InH2O, mBar, kPa, inHg

Flow Units

ccm, LPM, cfm

Test Modes

Leak, Flow, Occlusion, and up to 3 linked tests

Memory Capacity

128 Mbytes (Expandable internal option 512 Mb)

LAN (Network)

RJ45-LAN (Remote VNC,Telnet, Web-browser)

Peripherals (I/O)

USB Host Port (1 front, 1 rear)

HID interface: mouse, keyboard, bar code reader.

Mass Storage: Export data to USB flash memory

Printers: Output results and test parameters

USB Device Port (Virtual COM port control)

Serial RS-232 (DB9)

Accessory I/O

8 Opto Outputs, 8 Inputs, 3 Digital I/O

Input for remote start/stop, Output pass and fail

Calibration

NIST Traceable

Time Resolution

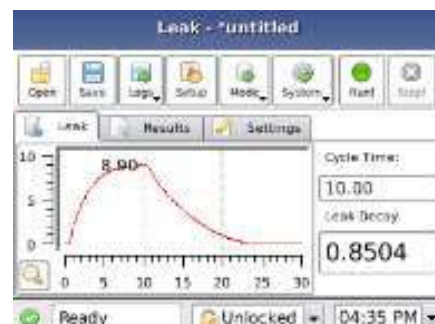
0.0 to 1000.0 Sec. (smallest increment 0.1 sec)

With the TME Worker Integra Leak Tester, you can create and store test programs associated with your products. The instrument can be locked with a key lock so the parameters cannot be accidentally changed.

When the leak test is run, you can select a real-time graphic display of the ongoing test that will, upon completion of the test, show test results (accept/reject, decay).

A more visible results screen is also available, to give the operator a vivid green (accept) or red (reject) results indicator while still providing the leak decay.

All test records are securely stored in the instrument's memory until the instrument is unlocked and the data are downloaded or erased



Models	Leak	Leak + Flow	E/P Regulator
Test Modes By Model	Leak Occlusion Link	Leak Flow Occlusion Link	* Same as Leak with automatic electronic regulator

Model	Vacuum	Pressure/Vacuum	15 psi	50 psi	100 psi	150 psi
Range (Psig)	-13.5 - -0.5	0 - 30 (PSIA)	0.5-15	1.0-50	2 - 100	2 - 150
Resolution (Psig)	0.0001	0.0001	0.0001	0.0001	0.0001	0.0001
Pressure Accuracy +/- 0.5% FSD	+/- 0.068	+/- 0.075	+/- 0.075	+/- 0.25	+/- 0.50	+/- 0.75
Repeatability (6 sigma/FSD)	< 1%	< 1%	< 1%	< 1%	< 1%	< 1%

Flow Ranges (CCM)	10.0 - 500	20 - 1000	100 - 5000	200 - 10,000
Accuracy +/- 2% FSD	+/- 10.0	+/- 20.0	+/- 100	+/- 200
Resolution (CCM)	0.1	1	1	1

RYCOBEL GROUP
Nijverheidslaan 47
8540 Deerlijk , België
T +32 (0)56 78 21 70
F +32 (0)56 77 30 40
E info@rycobel.com
www.rycobel.com

