

Linear abraser

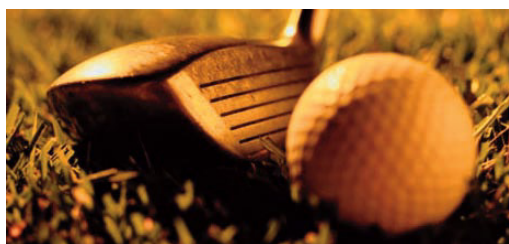


Measure abrasion resistance and other material properties of finished products of any size or shape – flat, concave or convex.

The Linear Abraser uses a free-floating head to follow the contours of every sample, permitting testing of finished products. With virtually no limit on sample size or shape, the Linear Abraser is ideal for testing consumer products, automotive components, painted parts, printed graphics, optical products, rubber, leather, textiles, and for use in testing laboratories.

Versatile testing with a single, rugged, durable machine.

With adjustable stroke length, speed, load, and a wide selection of Taber attachments, the Linear Abraser allows you to customize test parameters to your exact needs. Optional attachments can be used to perform scratch, coin scrape, Crockmeter, rub, pencil hardness scratch, paperclip mar, magnetic stripe abrasion, wire insulation scrape, chemical rub, plus custom testing.



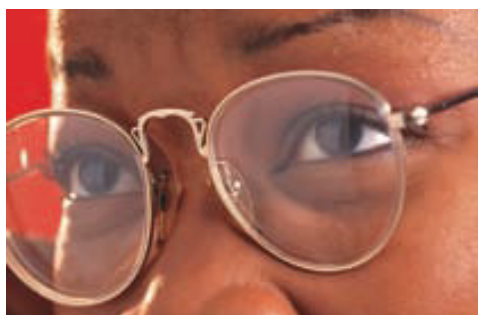
Maintain consistent testing standards with Taber's world-famous abrasives.

The Linear Abraser abrades with a Wearaser®. The size and shape of a pencil eraser, the Wearaser uses the same high quality Taber abrasive media found in our world-famous wheels so you're assured of consistent test results.



Linear Abraser includes:

- » Wearaser Collet and Spline Shaft (350 grams)
- » 250 gram Weight Discs (3 ea.)
- » CS-10 Wearasers (pkg. 10)
- » H-18 Wearasers (pkg. 5)
- » Power Cords (115V & 230V)
- » Hex L-Key Tool
- » Wearaser Depth Gauge Tool
- » S-14 Refacing Strips (pkg. 50)
- » Hand Brush



Optional Accessories (sold separately):

- » Wide selection of abrasants:
- » Calibrase® CS-8, CS-10F, CS-10, CS-17
- » Calibrade® H-10, H-18, H-22, H-38
- » T-Slot Universal Table
- » Auxiliary weight discs (10, 20, 50, 75, 100, 150, 250 gram)
- » Light weight spline kit
- » Jumbo Weraser Collet
- » Universal Attachment
- » Scotchbrite® Abrasive Pad Kit
- » Brass Brush Holder
- » Wire/Cable Scrape Abrasion Kit
- » Magnetic Stripe Abrasion Kit
- » Scratch Tips (call for additional information)
- » Coin Holder Attachment
- » Pencil Hardness Scratch Kit
- » Multi-Mar Scratch Attachment

Standard features

- » Eleven stroke lengths (0.2" to 4.0")
- » Variable stroke speed from 2 – 75 cycles per minute
- » Preset stroke speed buttons for 2, 15, 25, 30, 40, 60 cycles per minute
- » Variable load from 350 – 2100 grams with optional weight discs
- » Stainless Steel Weraser Collet for use with vitrified or resilient Werasers
- » Laser alignment guide
- » Programmable up to 999,999 cycles
- » 115V/230V switchable
- » CE Label

