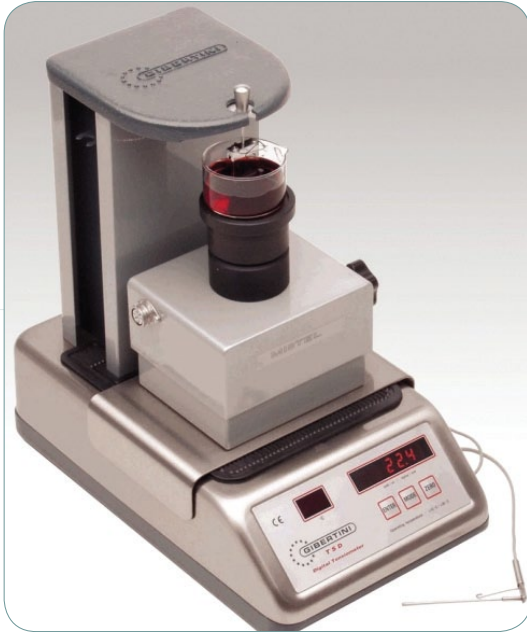


## DIGITAL SURFACE TENSIO METER



### Digital Tensiometer for liquid surface tension measurement

The surface tension is determined by the maximum value of the force measured right then at the contact between the sample and the glass or the platinum plate.

### Specifications

- Display of surface tension value mN/m (dyne/cm) measured with Wilhelmy method
- Precision  $\pm 0,2$  mN/m
- Power requirements 220V - 15% +10% 10VA (on request 110 V)
- Dimensions W 220 x D 355 x H 350 mm
- Max capacity 60 g

### Equipment

- Glass plates (dimensions 24x24x0.15 mm)
- Glass container for liquid sample
- Manual adjustable lab jack
- Suspended system for the arrangement of glass plate