

## JDC PRECISION CUTTER



- » 20" Base provides added leverage for cutting
- » Optional adjustable platforms available
- » Optional safety shield available

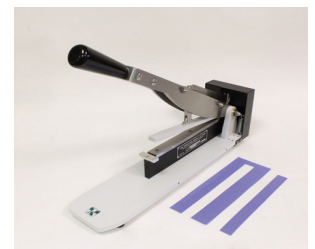
The JDC has become the accepted standard for most corporations worldwide for preparing samples of paper, paperboard, metal foils, nonwovens, films, tissue and a variety of other materials. Lightweight and portable, the JDC can also be anchored via the cast iron base for added stability and operator safety. Shields are provided to ensure safety as well.

The JDC cuts test strips to an exact width and parallel throughout their entire length. The positive cutting action of the dual blades and precision ground base shear cut both sides of the sample at once assuring you of a clean, accurate cut every time. The cutting blades are made of special tool steel which is stressrelieved by cycling between cold and hot temperatures to prevent the blades from warping.

The JDC cutter is designed to last for many years and a reconditioning service is available that provides the capabilities of a brand new cutter for half the cost. Reconditioning includes regrounding the cutting blades and providing a new base shear.

### Physical specifications

<b>Cutting specifications</b>	Width: 3mm to 76mm Length: 254mm, 304.8mm, 406.4mm
<b>Overall dimensions</b> (Based on cutting configurations)	127 mm x 559 mm x 381 mm
<b>Net weight</b> (Depends on cutting configuration)	10,5 - 46kg
<b>Gross weight</b> (Depends on cutting configuration)	15 - 51kg
<b>Parallelism tolerance</b>	.0254 mm
<b>Optional cutter accessories</b> (Additional cost)	Platform kit Safety shield kit

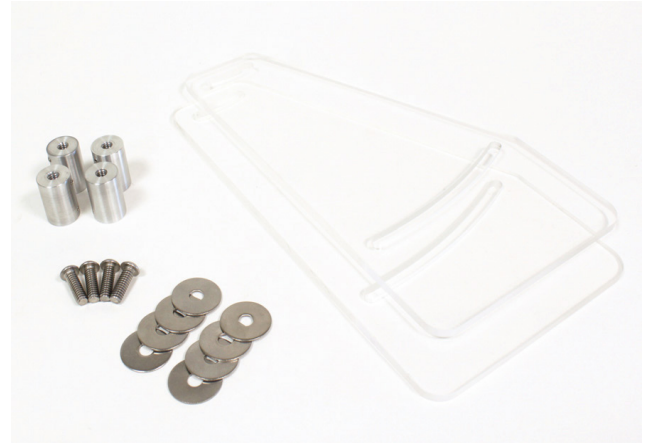


## Adjustable platforms

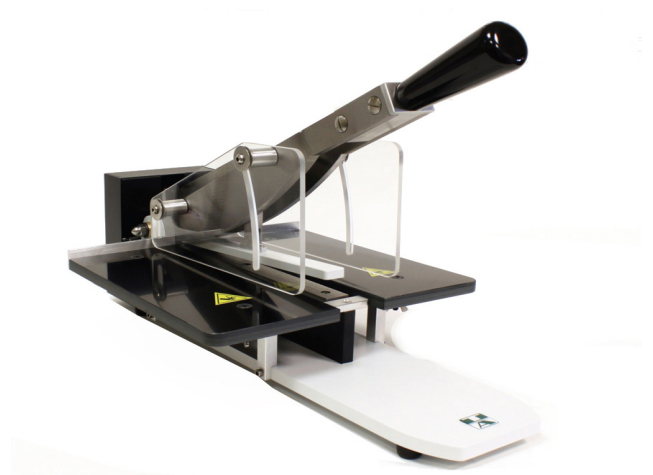
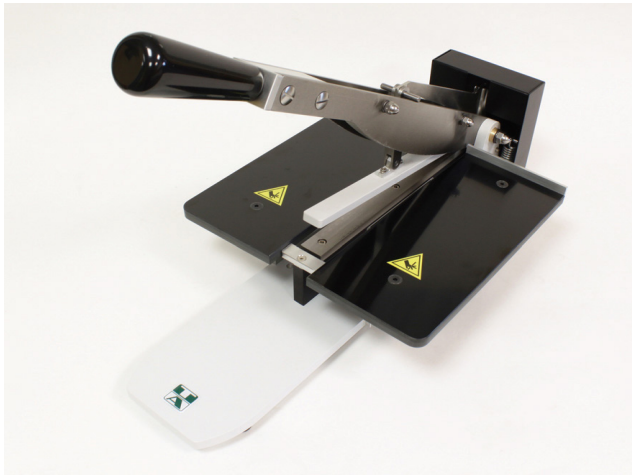


Platform Kit ( Part # 99 - 3011)

## Safety Shield

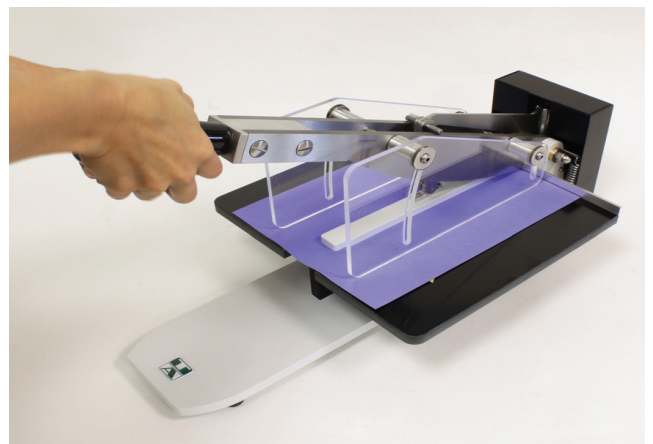
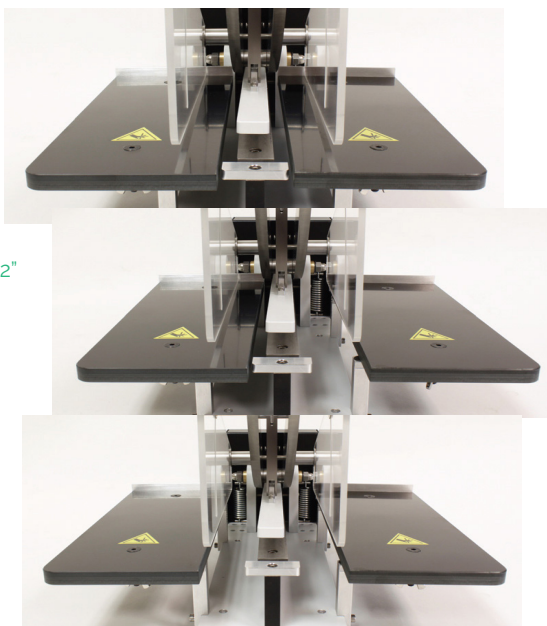


Safety Shield Kit ( Part # 99 - 3012)



Shown with optional platform kit and safety shield kit.

Adjustable platforms provide 12" to 14.5" cutting surface



### Reconditioning service includes:

Regrinding side blades and a new base shear