



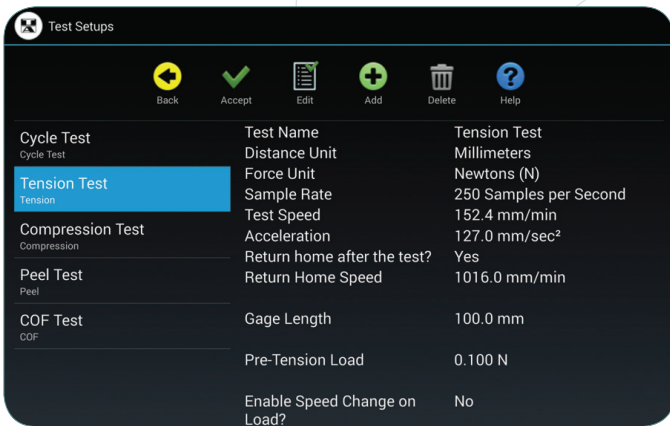
EJA VANTAGE TOUCH SCREEN INSTRUMENT CONTROLLER



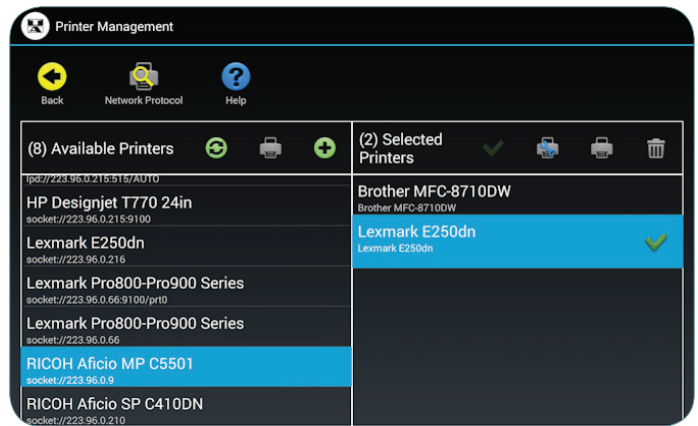
You choose the option to control the EJA Vantage using a touch screen tablet that is connected to a built-in bluetooth system. Run basic test functions with the touch of your fingertips.

- Designed for quick and easy testing
- NO PC needed to run tests
- Minimal operator training required
- Two screen size options - you choose: 7" or 10"
- Ready to test: Tensile, Peel, Compression, COF
- Easily modify test parameters
- Automatic load cell recognition
- Bluetooth communication
- Network printer support

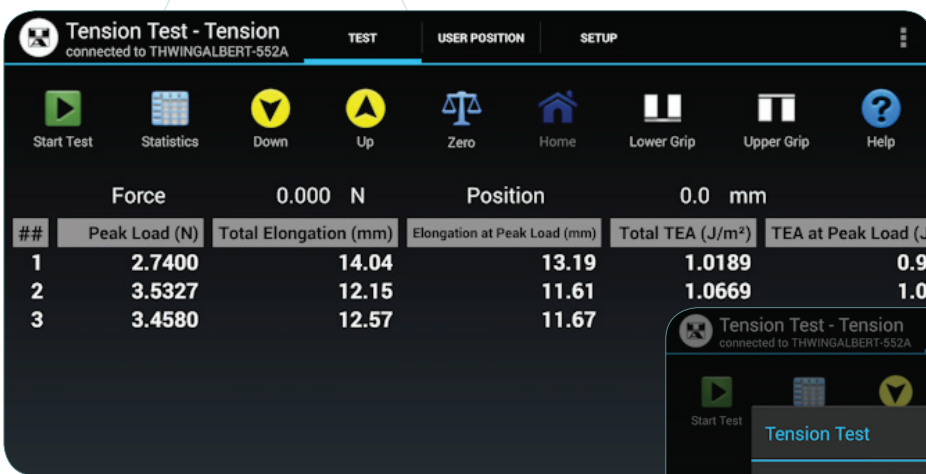
The touch screen instrument controller provides a simple, stand-alone version of the EJA Vantage Series Universal Testing Machine. Now there is a simplified way to run tensile tests, peel tests, compression tests, and COF tests without the need for a computer. Using a touch screen tablet that is connected to a built-in bluetooth system, technicians can run basic test functions with the touch of their fingertips.



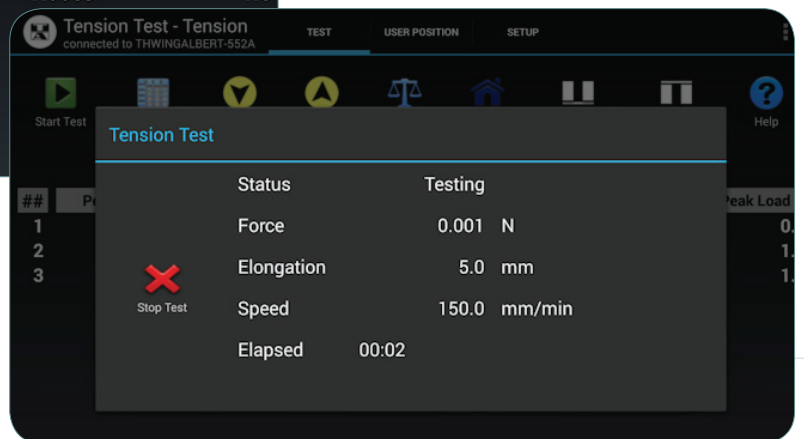
▲ Select a test to perform and adjust settings



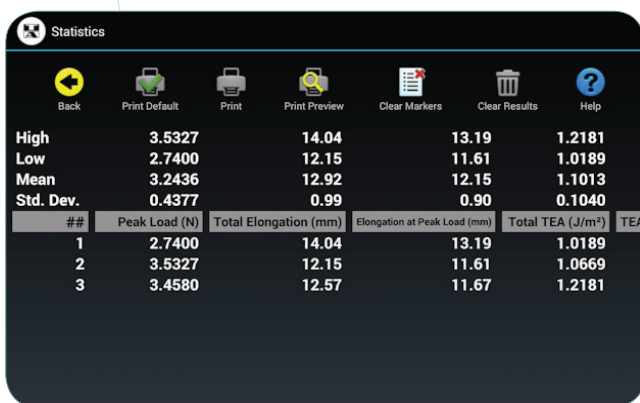
▲ Connect to a network printer via bluetooth



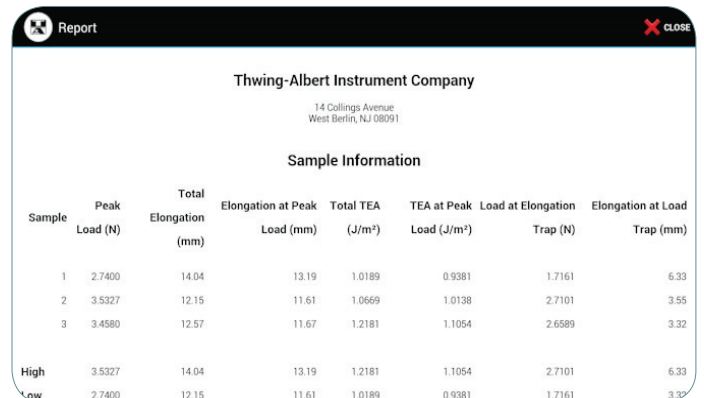
▼ Once a test starts, real-time test information and a stop test button will be displayed.



▲ Move the crosshead position and grips from the main screen. View recent test results and access statistics.



▲ Review statistics and generate printable reports



▲ Reports can be printed via Wifi-connected network printer

RYCOBEL GROUP
 Nijverheidslaan 47
 8540 Deerlijk, België
 T +32 (0)56 78 21 70
 F +32 (0)56 77 30 40
 E info@rycobel.com
 www.rycobel.com

