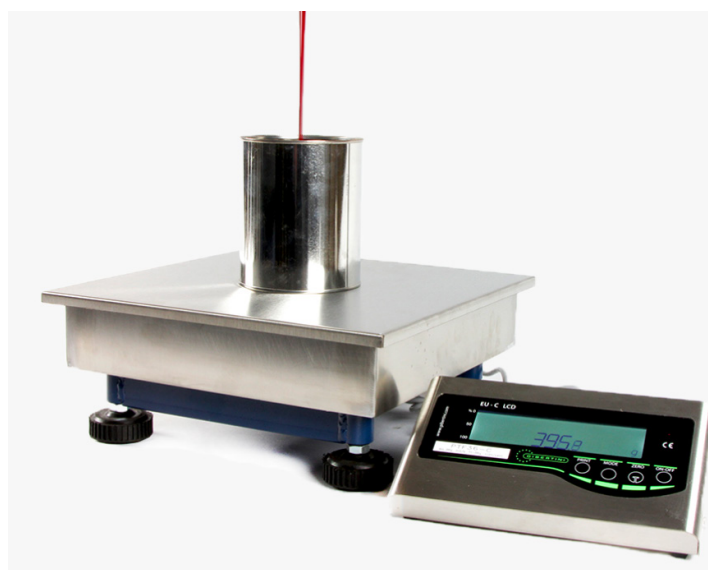
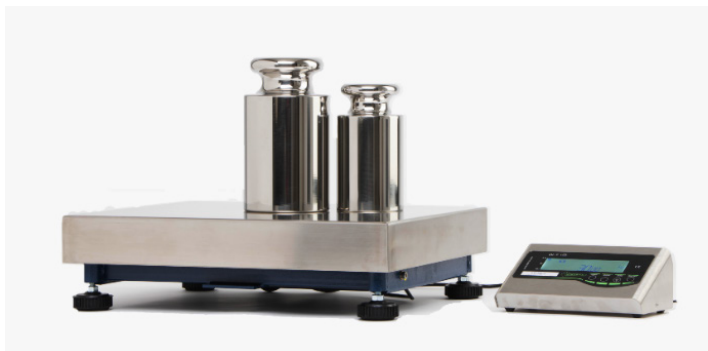


LOAD CELL TECHNICAL BALANCES

PTF-C "ATEX" Series



PTF-C "Atex" series scales with division from 0.1g to 20g and maximum capacity from 15kg to 600kg

Functions

- » LCD display with small decimal digits for easier and more immediate reading
- » Waterproof and acid resistant membrane keyboard, easy and immediate operation with ON / OFF, TARE, MODE and PRINT keys (RANGE / PRINT for the DR model)
- » Indication of stable weight
- » Bar-graph indicator of dosage and scale used
- » Functions that can be activated from the menu: readings in g (grams), lb (pounds), oz (ounces), ct (carats), pcs (pieces), % (percentage)

Technical specifications

- » Waterproof and acid resistant membrane keyboard and easy to use 7 segments display
- » Stainless steel weighing plate
- » Metallic body with epoxide protection
- » Adjustable feet for leveling
- » Data output: 1/0 USB adjustable
- » Operating temperature: 10°-;- 40° C
- » Power supply: 220VAC (-15% / +10%)

Model	Capacity	Division	Linearity G	Repeatability g	Response time	Pan mm
PTF 15000-C	15 kg	0,1 g	± 0,3	± 0,2	3/4 sec.	300 x 240 mm
PTF 36-C	36 kg	0,1 g	± 0,5	± 0,2	3/4 sec.	330 x 330 mm
PTF 50-C	50 kg	1 g	± 2 g	± 2	3/4 sec.	400 x 500 mm
PTF 150-C	150 kg	1 g	± 2 g	± 2	3/4 sec.	700 x 700 mm
PTF 36.1-C	36 kg	1 g	± 2 g	± 2	3/4 sec.	400 x 500 mm
PTF 75.2-C	75 kg	2 g	± 2 g	± 2	3/4 sec.	400 x 500 mm
PTF 150.5-C	150 kg	5 g	± 5 g	± 5	3/4 sec.	400 x 500 mm
PTF 300.10-C	300 kg	10 g	± 10 g	± 10	3/4 sec.	700 x 700 mm
PTF 600.20-C	600 kg	20 g	± 20 g	± 20	3/4 sec.	700 x 700 mm